

ERCO

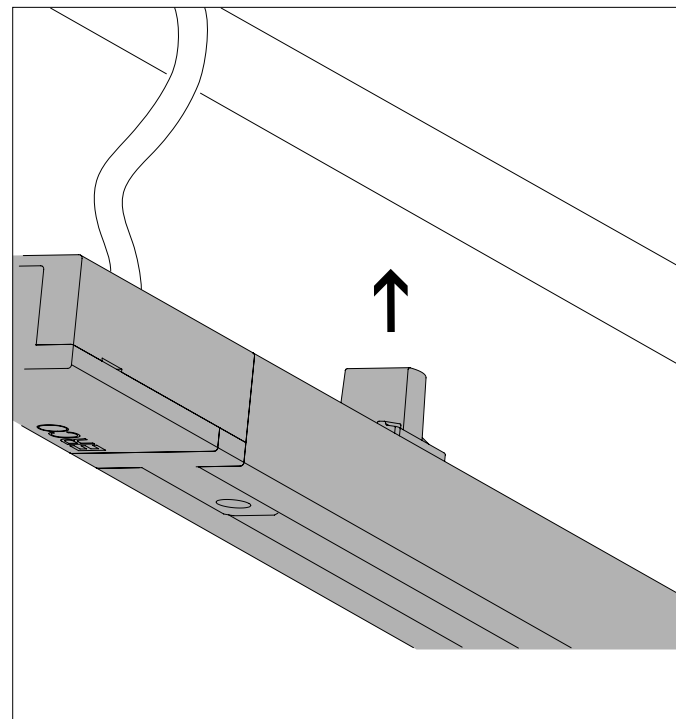
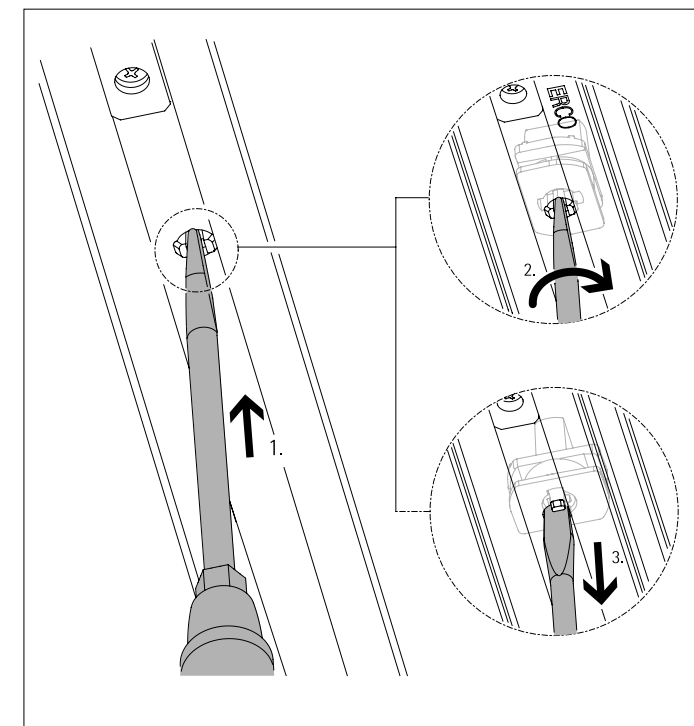
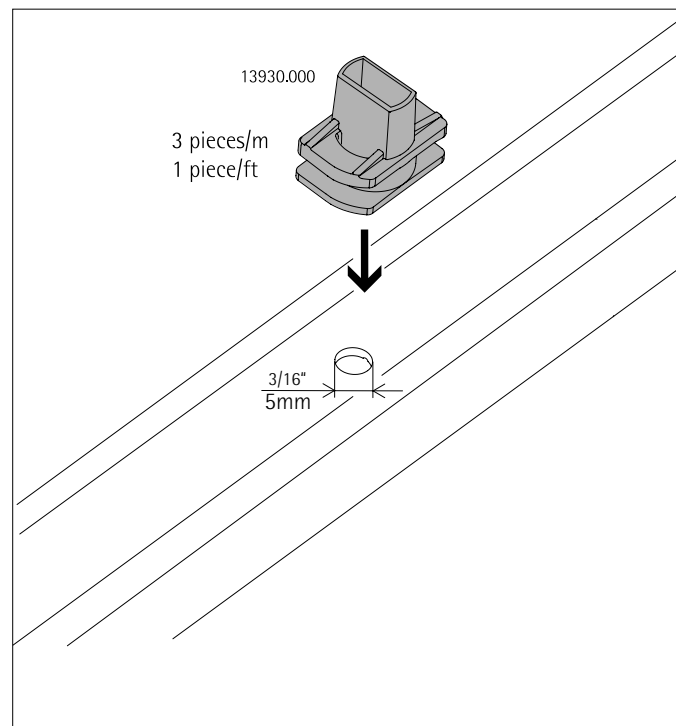
ERCO GmbH
Postfach 2460
58505 Lüdenscheid
Brockhauser Weg 80-82
58507 Lüdenscheid
Germany

Tel.: +49 2351 551 0
Fax: +49 2351 551 300
info@erco.com
www.erco.com

Minirail 48V

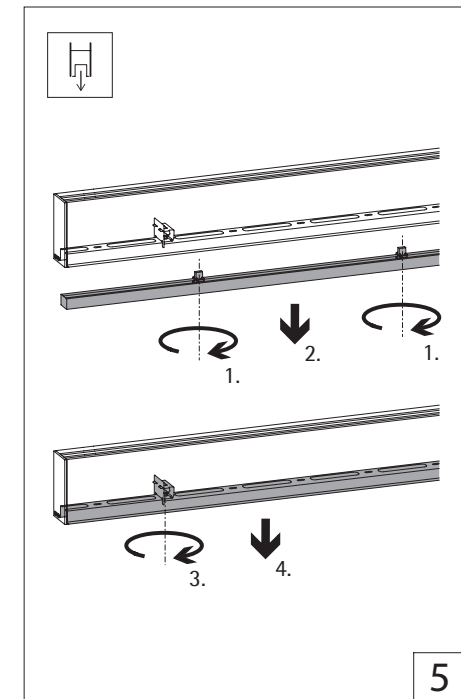
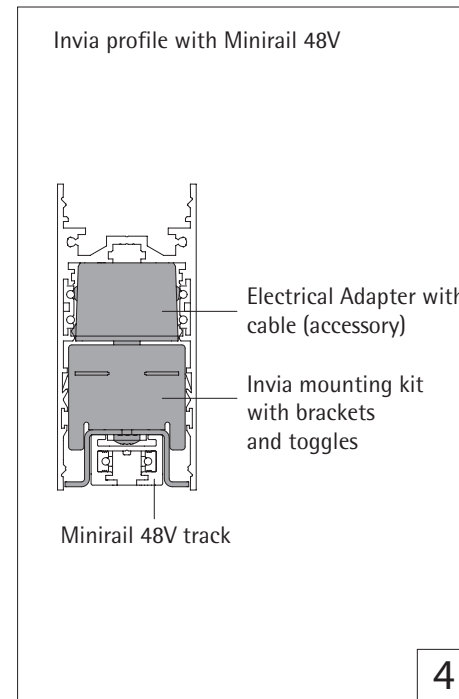
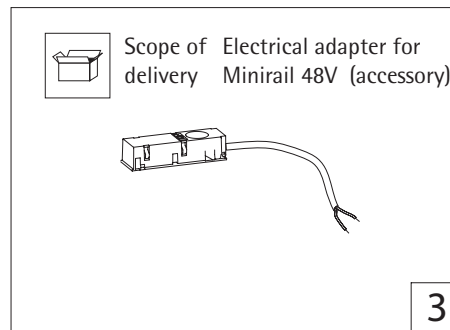
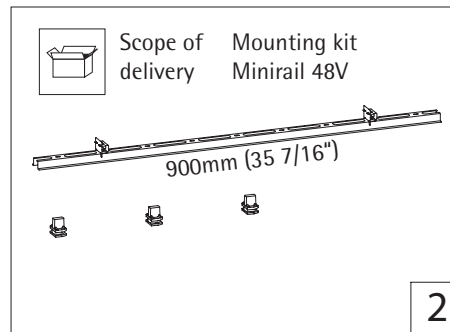
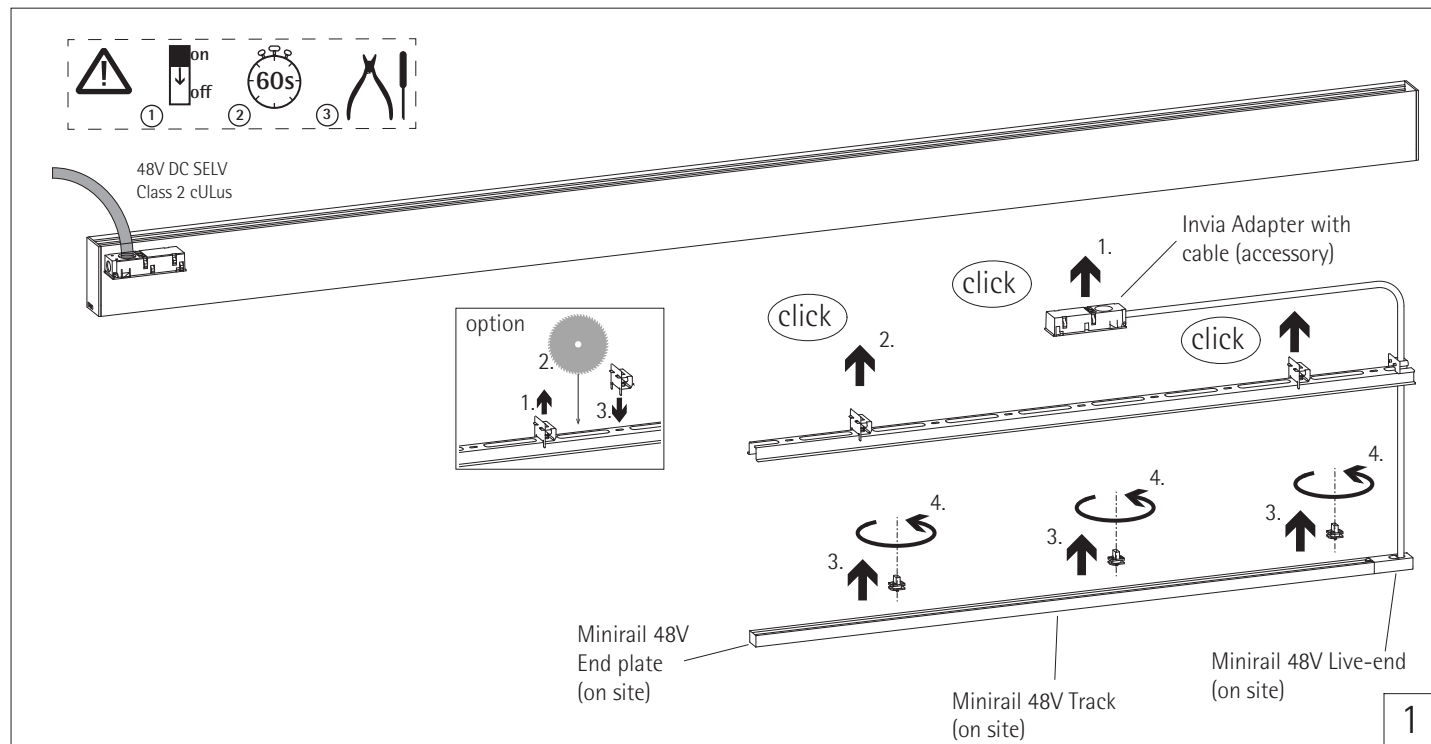
Knebel-Set
Toggle set
Jeu de poignées
Knevelset
Set traversine
Set de montage
Vredsaet
Spaksett
Montagedel med låsefunktion (sæt)
Набор ручек
开关组

Montageanleitung
Mounting instructions
Instructions de montage
Montagehandleiding
Istruzioni per il montaggio
Instrucciones de montaje
Monteringsanvisning
Monteringsveiledning
Monteringsvejledning
Инструкция по монтажу
安装说明



Mounting kit and adapter for Minirail 48V

Mounting instructions



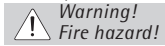
English

- Always follow the instructions of all components used!
- Read these instructions carefully before installation and commissioning and hand over to the customer for retention.

General safety information



- Before installation always make sure that the 48V power supply is switched off.
- The mounting kit and adapter are only approved for mounting in the ERCO Invia 48V system. Never operate the adapter with higher voltage. The power supply must always be SELV (safety class III International) and Class2 (USA/Canada).



Do not open the electrical adapter and do not change the wiring. Do not operate with damaged cable.

Attention!

- Avoid damage to the Invia 48V system by switching off the system to disconnect it from the power supply and waiting at least 60 seconds before fitting or removing any system components!
- When installing, always observe the national installation and accident prevention regulations.

Intended use

The Minirail 48V mounting kit and adapter are approved exclusively for the mounting of Minirail 48V track in the underside of the Invia 48V system. You can shorten the adapter bar on site.

Mounting kit for Minirail 48V

The mounting kit includes (Fig. 2):

- 900mm (35 7/16") adapter bar with pre-mounted fixing clips.
- 3 fixing toggles for mounting the Minirail 48V track.

Note: Order Minirail 48V track and live ends separately!

Adapter for Minirail 48V

- The electrical adapter for Minirail 48V, which must be ordered separately, has a pre-assembled connection cable (Fig. 3).
- Note for equipping a complete Invia profile of 1800mm (70 1/8"): 2 mounting kits and 1 electrical adapter are required.

Mounting

Before mounting the mounting kit

Check whether the 48V power supply of the Invia system has sufficient capacity for additional luminaires.

Mounting steps (Fig. 1)

1. If necessary, shorten the adapter bar and move the fixing clips.
2. Insert the electrical adapter into the Invia 48V profile so that the connection cable extends approx. 10cm (3 15/16")

beyond the adapter bar.

3. Insert the adapter bar with the fixing clips into the Invia profile from below at exactly the desired position. If the complete Invia profile is to be equipped, mount another adapter bar.

4. Now mount the Minirail 48V track to the adapter bars according to the Minirail 48V documentation. Use the enclosed toggles.

Notes:

- You can also run a Minirail 48V track over 2 adapter bars without interruption.
- When mounting the luminaires for Minirail 48V, make sure that the load per profile does not exceed 15kg (33.06lbs). The capacity of the power supply must also not be exceeded.
- Minirail 48V and Invia 48V are reverse polarity tolerant. If luminaires from other manufacturers are to be mounted, you may have to observe the polarities.

Dismantling (Fig. 5)

1. Loosen the toggle and remove the Minirail 48V track.
2. Loosen the Phillips screw that secures the adapter profile to the fixing clip and remove the adapter bar.